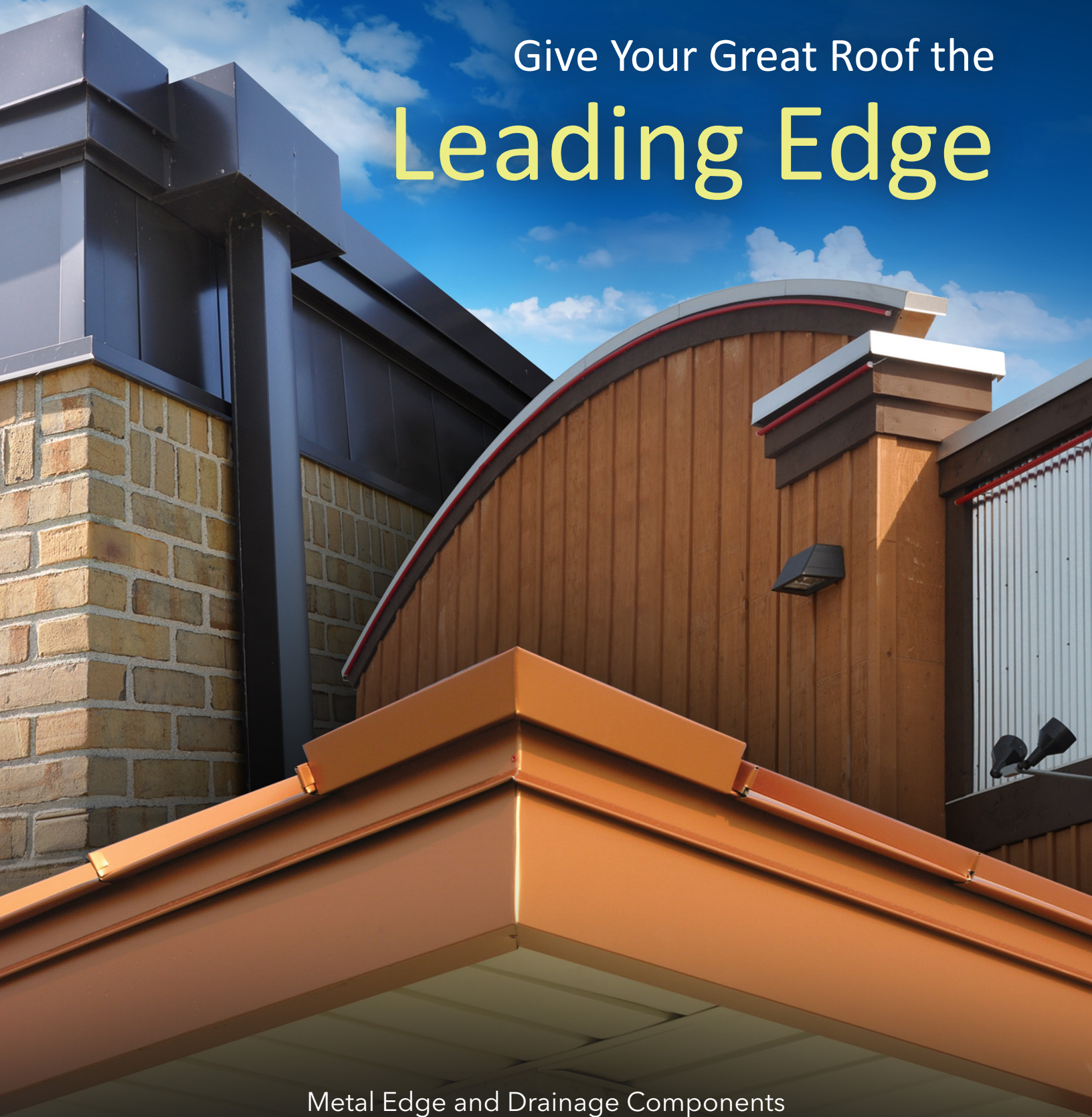




Give Your Great Roof the  
**Leading Edge**



Metal Edge and Drainage Components



# Exceptional Details for Exceptional Roofs.

Even the “World’s Best Roof®” will only perform as well as its edge details, drainage system and other metal components. In fact, nearly three-quarters of all leaks originate not in the roof itself, but in these critical details.

High-quality metal products designed for Duro-Last® Roofing Systems offer you unsurpassed protection, durability and environmental efficiency – and are backed by industry-leading warranties and code compliance. Visit [exceptionalmetals.com](http://exceptionalmetals.com) for a complete listing of products that are ANSI/SPRI ES-1 and FM approved.







## Details Make the Difference

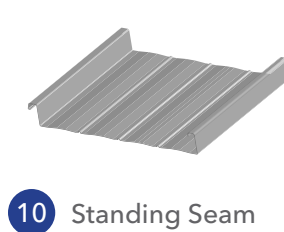
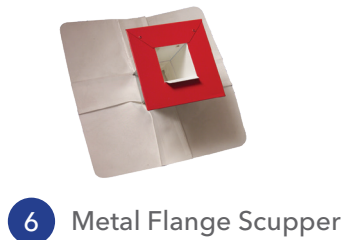
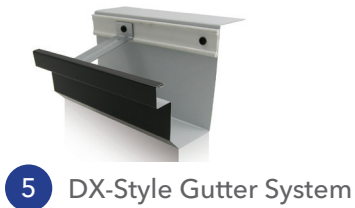
The right details can make a huge difference in how a roof looks – and how it performs. EXCEPTIONAL® Metals, a division of Duro-Last, Inc., designs and manufactures high-quality metal edge details, drainage systems, scuppers, collector boxes, pitch pans and other custom-fabricated products.

While they will work with any single-ply roof, these products are designed to complement Duro-Last Roofing Systems. Many are made with vinyl-coated metal, so authorized Duro-Last contractors can provide a secure, water-tight bond between the edge detail and Duro-Last membrane.

The superior design of our components, and their compatibility with Duro-Last Roofing Systems, offer you state-of-the-art protection against the elements.



# Details Matter





The Duro-Last Roofing System includes details custom-designed and manufactured by EXCEPTIONAL® Metals. Our full line offers a variety of options – so you can finish and complement every roof design while effectively channeling the water off the rooftop.



## Metal Roof and Wall Panel Systems

Your design isn't right for a single-ply membrane roof? We can still help. Duro-Last and EXCEPTIONAL Metals also offer a full line of metal roof and wall panel systems. To learn more, contact us at 1-800-248-0280 or at [exceptionalmetals.com/roof](http://exceptionalmetals.com/roof).



# Edge Details

High-quality metal edge details from EXCEPTIONAL Metals create durable, reliable terminations and transitions with Duro-Last and other single-ply membrane roofing systems. They are available in a variety of stock finishes, which are usually shipped within five business days, as well as in custom finishes and designs.



## Our edge details include:

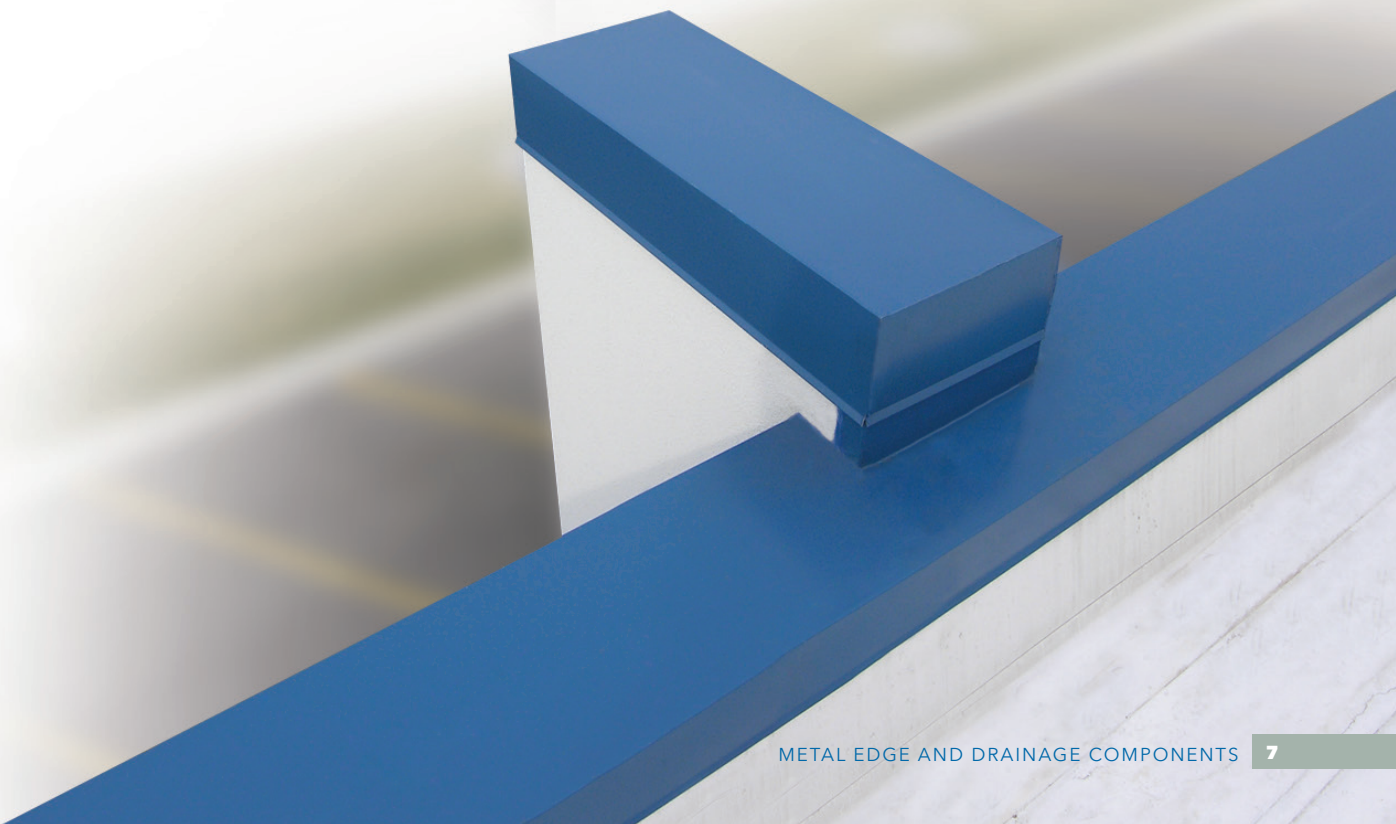
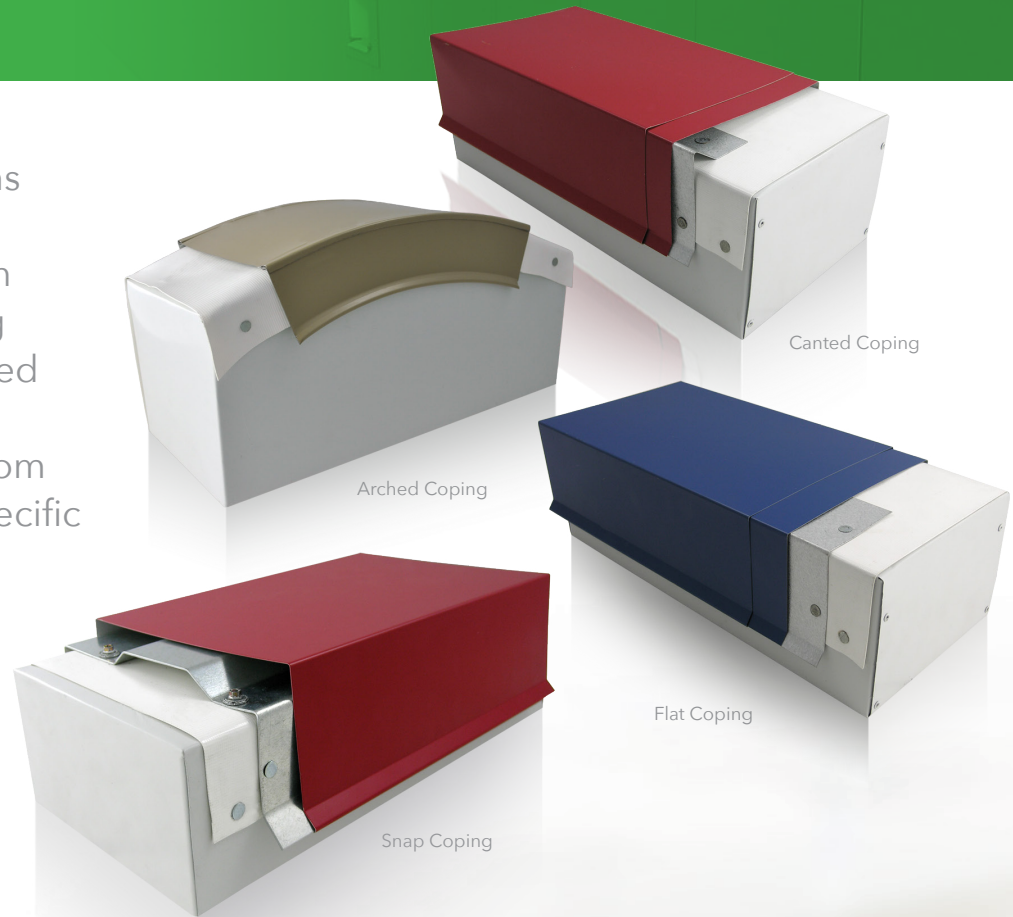
- Universal 2-Piece Snap-On Compression Edge
- High-Profile® Fascia
- Steel Fascia Base
- Gravel Stop Covers
- Fascia Covers
- Edge Extenders
- T-Edge
- Vinyl-Coated Drip Edge
- All-Term™

Contact us to see how you can get same day or express shipping on some of our most popular details and colors.



# Coping

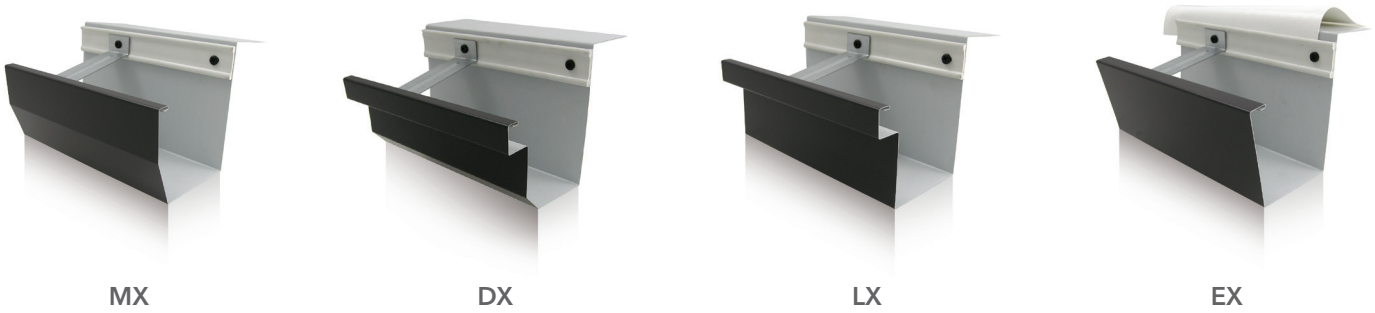
Our various coping systems provide a complete finish and enhance draining from any parapet wall, including flat, canted, snap and arched coping. We also have the capability to produce custom copings that meet your specific design needs.





# Gutters

Duro-Last X-Series Gutters by EXCEPTIONAL Metals come in four box-style profiles and a variety of sizes to accommodate virtually any drainage need.



Downspouts are available in a variety of sizes with a traditional closed face or an open face, which prevents blockages from ice and debris.





# Conductors and Scuppers

Conductor boxes and scuppers are precisely crafted to exact specifications, offering you through-wall drainage in a package that enhances the aesthetics of your design.



## Our products include:

- Collector Boxes
- Single and Double Skirt Scuppers
- Metal Flange Scuppers
- Conductors



Vinyl-Back Collector



Conductor



Single Skirt Scupper



# Custom Capabilities

You have an idea. We can bring it to life. Duro-Last's EXCEPTIONAL Metals division has the custom design and fabrication capability to create nearly any edge metal, drainage or trim design concept – and make sure it works perfectly with your roofing system.

Some of our custom fabrications have included:

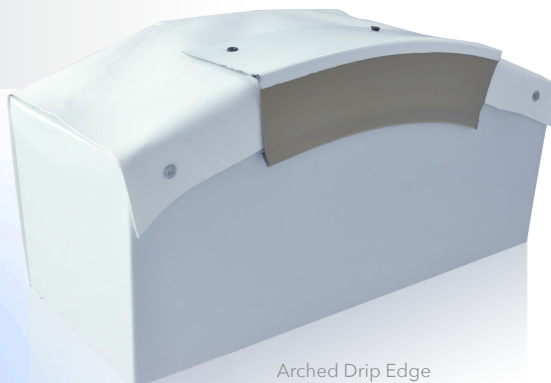
- Arched Drip Edge
- Wall and Ridge Vents
- Vinyl-Coated Hubs and Pitch Pans
- Custom Conductor

What's your idea?

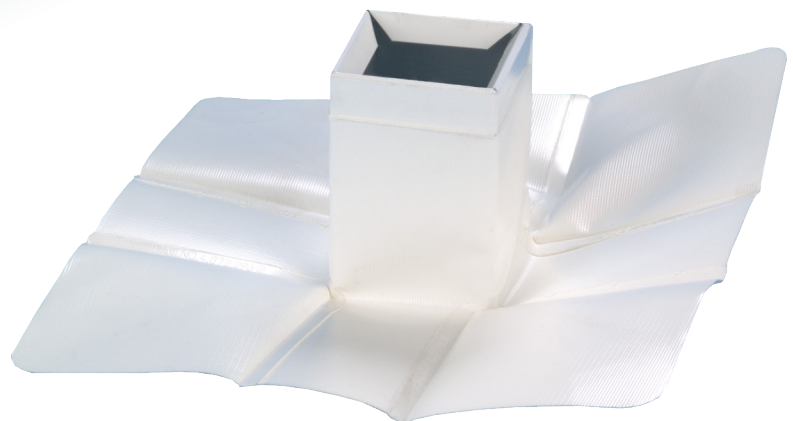
Contact us at 1-800-248-0280 or [exceptionalmetals.com](http://exceptionalmetals.com) to discuss your custom needs.



Custom Conductor



Arched Drip Edge



Vinyl-Coated Pitch Pan



# The Color of Quality

Duro-Last offers a range of standard colors.

Available in a wide variety of colors, EXCEPTIONAL Metals' products utilize metals with Durapon 70® coatings, featuring Hylar 5000® resin that provides excellent color retention and quality. Durapon 70 is harder and more flexible than other premium PVDF coatings on the market, creating a surface that's exceptionally resistant to installation scratching, marring and transit abrasion, and has the flexibility to handle the most demanding post-forming operations. Additionally, Durapon 70 can be formulated with Cool UV reflective pigmentation to meet high- and low-slope Cool Roof Rating Council (CRRC) specifications.

We also offer a mill-finished Galvalume with a two-sided, clear chromate/acrylic finish. It eliminates handprints and stains from handling and storage. The acrylic finish dissolves over time, allowing for natural and even weathering.



## Environmental Performance

Duro-Last edge metal products contain materials that are recyclable at the end of their useful life. They use infra-red reflective pigments that help reflect the sun's UV rays and lower energy costs.



## Let's get started!

How can Duro-Last and EXCEPTIONAL Metals help you create a roofing system that is functional and beautiful? Contact us at 1-800-248-0280 or visit [exceptionalmetals.com](http://exceptionalmetals.com)



## Best-in-Class Warranties

Duro-Last leads the roofing industry with comprehensive warranty coverage. We work hard and stand by every square foot. With our warranty groupings, we have a level of coverage right for any job.

### Paint and Substrate Warranties

- 35-year non-prorated Kynar® 500/Hylar® 5000 paint warranty with a 20-year Galvalume® substrate warranty
- 35-year non-prorated Kynar paint and 25-year aluminum substrate warranty
- 25-year non-prorated Galvalume® Plus (Acrylic coated Galvalume®) warranty



For more information give us a call or visit our website today.

800-248-0280  
[exceptionalmetals.com](http://exceptionalmetals.com)

"Duro-Last", the "World's Best Roof," "High-Profile" and "EXCEPTIONAL" are registered trademarks owned by Duro-Last, Inc.

"Durapon 70" is a registered trademark of Dura Coat Products, Inc.

"Hylar" is a registered trademark of Solvay Solexis S.p.A.

Galvalume is a registered trademark of BIEC International Inc.

Metal Edge Booklet – DL\_EM Original 3/15 Rev 1.20.17, 6.5.18, 2.26.18, 10.29.21 – EM090005

